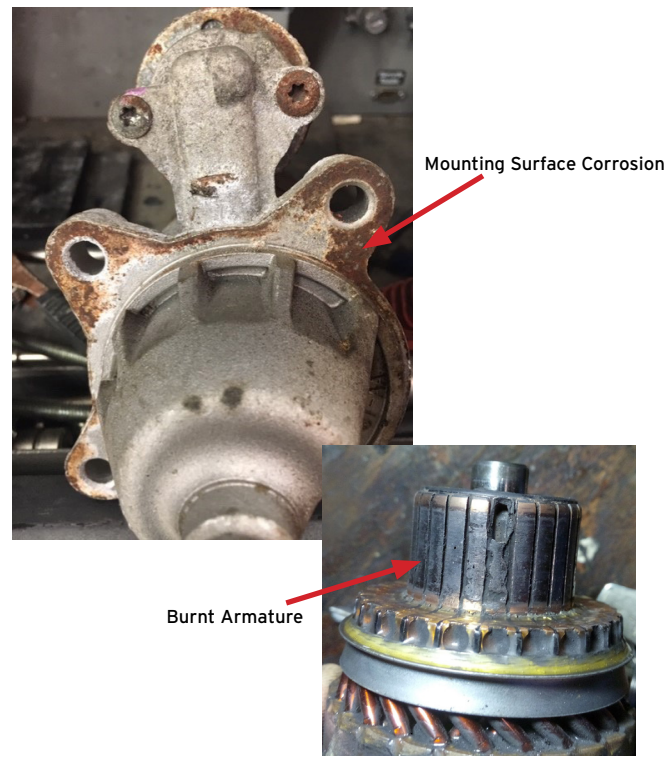




Application: Many Ford Vehicles
(This issue spans a large number of vehicle models and years.)

- ▶ **Symptoms:**
Starter failure caused by a contaminated or corroded starter mounting surface.
- ▶ **Causes:**
 - Corrosion
 - Oil
 - Dirt and Debris
 - Paint Build-Up
- ▶ **The Solution:**
Remove the starter and clean the starter mounting surfaces. Replace the starter if necessary.



Avoid starter failure by maintaining clean, corrosion-free mounting surfaces for proper performance.

Many Ford vehicles are known for high corrosion and oil contamination at the starter mounting surfaces. All of the corrosion and oil seen on the starter's mounting surface will also be found on the engine's starter mounting surface, causing a poor or faulty starter ground, leading to excessive voltage drop in the starter circuit.

Resistance in the starter circuit is often caused by old battery cables or poor connections at the battery, starter, or engine block (grounds). The bottom line is if the starter motor can't turn the engine fast enough, it has to endure the loading and unloading of each compression stroke. Resistance will damage the starter, causing it to fail.

Low voltage will damage the starter's internal components such as the brushes and the armature, shortening their life and making it hard to start the vehicle. Because most starters are grounded through the engine block, if there is excessive oil contamination, corrosion, or paint build up on the starter mounting surface, the starter will have a faulty ground connection. This faulty ground connection will create excessive voltage drop causing the starter to overheat and fail prematurely. Make sure to clean the starter mounting surface anytime the starter is removed from the vehicle. Proper cleaning and maintenance are crucial before installing a replacement starter.

You can avoid these conditions by maintaining a clean and corrosion-free starter mounting surface. Many of these Ford vehicles are subject to off-road and rigorous conditions, leading to dirt, salt, oil, and corrosion. Keeping the engine starter mounting surface clean and free of corrosion is crucial to having a secure ground connection. A secure ground connection will help your starter last a lot longer, saving you money and making sure you don't have to keep replacing starters.

TECHNICAL SUPPORT
800-228-9672
ASE Certified Technicians are Standing by 7 days a week.



motorcar parts of america, inc.
motorcarparts.com



For this and other Part Smart tech articles, [Click Here.](#)